



ROYA
series

WHERE VISION MEETS TECHNOLOGY



ROYA series

Interactive Flat Panel

WHERE VISION MEETS TECHNOLOGY

Introduction:

Engineered for versatility, Roya offers unparalleled interactivity, making it ideal for education, corporate, and training environments.



Products:

Interactive Flat Panels 65", 75", 86", 98", 110"

Available in various sizes for dynamic learning experiences to suit different needs, with features like zero-bonding technology for clear visuals, multi-touch functionality, and advanced camera options.



Specifications:

- Resolution: 3840x2160px (4K)
- Android 14 support
- RAM: 8GB
- ROM: 128GB
- Touch technology: IR touch (40 points)
- Camera: 48MP with 10M microphone pickup
- OPS PC (optional)

Features:

- Front USB-C Port (charging)
- Multi-windows Support
- Multi-user Support
- NFC functionality
- DMS control system
- Zero Gap Bonding Panel
- 4mm Anti-Glare Tempered Glass
- Cloud Drive Support
- Light Sensor

Warranty: 5 years*

*Conditions apply



Anti-Glare Tempered Glass



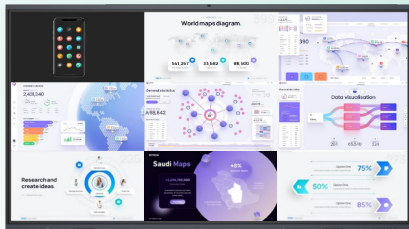
Android 14 support



IR touch (40 points)



Screen Share:



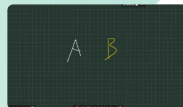
Platform	Android	iOS	MacOS	Windows
Software	●	●	●	●
Wireless	●	●	●	●

* Wireless presentation up to 9 concurrent devices;
wireless screen share for multiple devices.

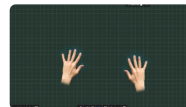
Supported Systems



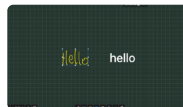
Whiteboard App Features



Dual-Color Writing



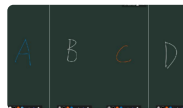
Multi-Point Handwriting



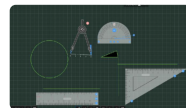
Smartwrite



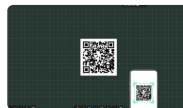
Preview



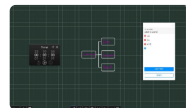
Four-split screen writing



Measurement



Scan the QR code
to receive content



Mind Map